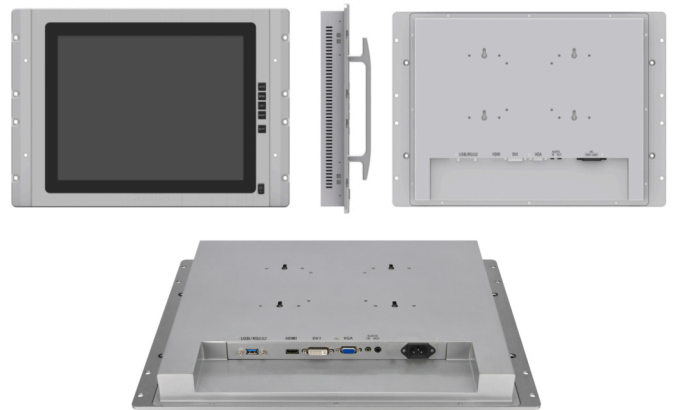


WTM-150S3-C/N Series

Features

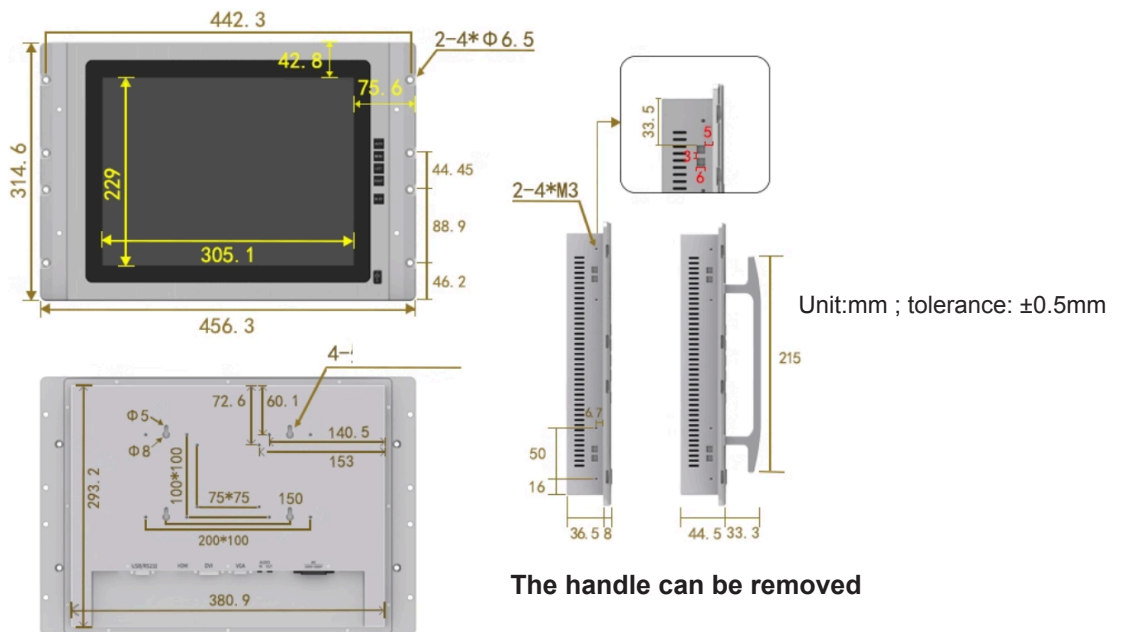
- 15-inch 4:3 Standard Screen Industrial Touch Monitor
- The front panel supports IP65
- Support VGA, HDMI, DVI-D, Automatic identification signal channel
- High-hardness metal enclosure, anti-interference, heat resistant, suitable for harsh environments
- Industrial high-brightness screen, 24h uninterrupted operation
- 1x front panel USB port ; Built-in dual speakers
- Industrial keys, 100,000 times fatigue resistance, durable operation



Specifications

Display Parameter Touch Parameter	Size	15-inch 4:3 Standard Screen Industrial Monitor
	Resolution	1024*768
	Color	16.7M
	Luminance (cd/m ²)	300cd/m ²
	Contrast ratio	1500:1
	Viewing Angle (H/V°)	89/89/89/89 (L/R/U/D)
	Backlight Type	LED
	Life	60000h
	Touch Method	Non-touch / Projection capacitive Touch
	Response Time	5 ms
Interface Parameter	Touch interface	1* USB port for Touch Panle
	Display input port	VGA / DVI-D / HDMI
	Audio interface	1*Audio I/O, Support audio input and output / Built-in dual speakers
	AC Power Connector	1
	Menu button	Suuport Simplified Chinese, Traditional Chinese, English and multi-language support
Power	Power Input	AC 100~240V
	Operating temperature	-10°C ~ 60°C
Working Envoriment	Storage temperature	-20°C ~ 60°C
	Operating Relative humidity	10% ~ 90%
	Installation Method	Panel mount /Wall embedded /Wall mounted /Desktop /Folding mounting /VESA mount /Suspended mounting/ M6, through hole on the front of the screw
Physical Characteristic	Product Dimensions(WxHxD)	453.3 x 314.6 x 44.5 mm
	Cutout Size(mm)	383 x 296 mm
	Weight	Weight : 4.5KG / Weight (Including Package) : 7KG
	Appearance Color	Silver
	Housing Material	Metal + Aluminum

Dimension



Ordering Information

SKU Number	Description
WTM-150S3-C	15-inch Industrial Monitor with VGA, HDMI, DVI-D, Audio input and Output, Projection capacitive Touch
WTM-150S2-N	15-inch Industrial Monitor with VGA, HDMI, DVI-D, Audio input and Output, Non-Touch

Accessory List

Description
1* USB Cable , 1* VGA Cable , 1* AC Power Cable